



PERLIGHT SOLAR
Powering Possibilities

CIGS FLEXIBLE MODULES

FLEX SERIES

Power range: 80W - 510W

- Various Sizes
- Self Adhesive

KEY FEATURES



Record efficiency levels with superior energy output offered in a flexible module



Ultra-lightweight at less than 2.1kg/m² (<0.5 lb/ft²)



Simplified self adhesive with no requirement to bolt, ballast or drill holes



Resistant to high wind load and high seismic hazard areas, ensuring reliable performance



More Bypass diodes reduce PV systems shading loss.



Bonds directly onto a wide range of approved surfaces

EXTENDED POWER OUTPUT WARRANTY

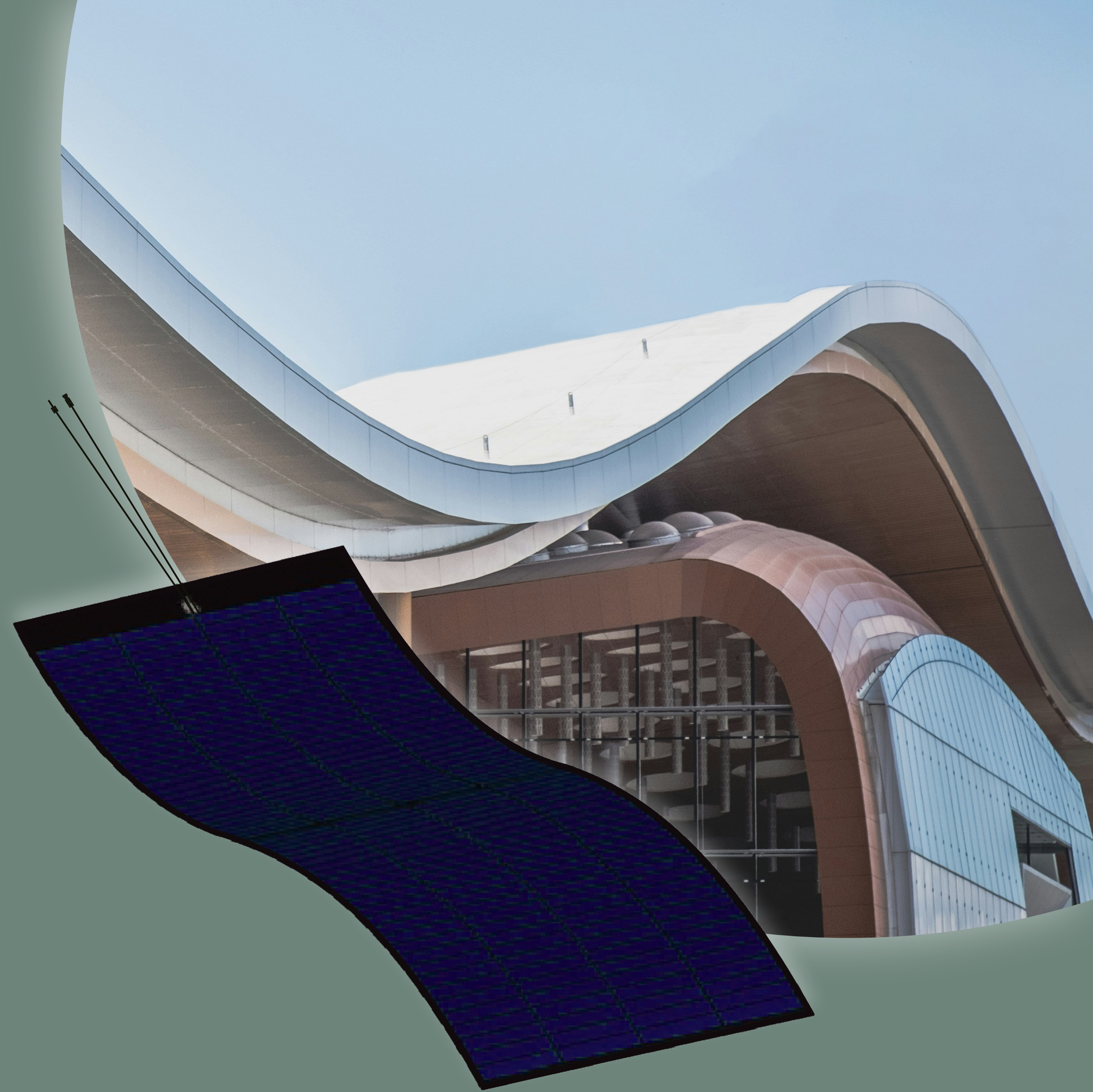
10

years more
than 90%
power

25

years more
than 80%
power

5 years workmanship warranty



*Enhance your planning freedom
with ultra-light, efficient flexible
solar modules that bonds
directly to curved surfaces.*

QUALITY MANAGEMENT SYSTEM AND PRODUCT CERTIFICATION

IEC 61215-1, IEC 61215-2
IEC 61730-1, IEC 61730-2

ETHICAL MANUFACTURING STANDARDS



The SA8000® Standard helps secure ethical working conditions for millions of workers globally. Established by Social Accountability International, the Standard leverages the power of businesses and consumers to purchase products or services from workplaces that enrich the livelihoods of people.

As a Sedex member we are committed to being a responsible business, sourcing responsibly, and improving ethical standards and working conditions within the supply chain.

Sedex Member





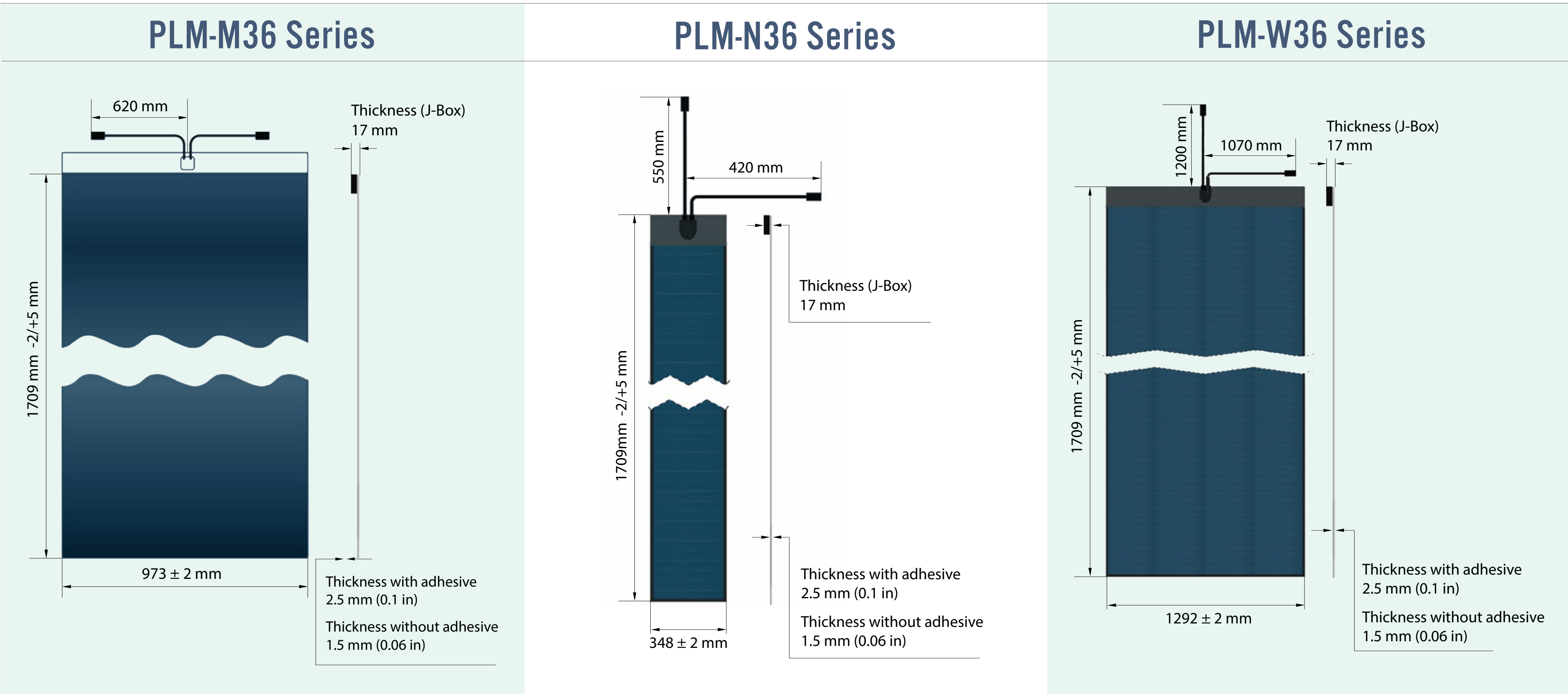
ELECTRICAL PERFORMANCE (STC)		PLM-M36 Series			PLM-N36 Series			PLM-W36 Series		
Nominal Power	[W]	230	240	250	70	75	80	300	310	320
Aperture Efficiency	[%]	15.50	16.20	16.90	14.20	15.20	16.20	15.20	15.70	16.20
Maximum Power Voltage	[V]	18.80	19.40	20.00	17.80	18.30	18.80	38.40	38.50	38.60
Maximum Power Current	[A]	12.25	12.38	12.52	3.93	4.09	4.26	7.81	8.04	8.29
Open Circuit Voltage	[V]	23.80	24.20	24.70	22.6	23.30	23.80	48.10	48.20	48.30
Short Circuit Voltage	[A]	14.00	14.04	14.08	4.65	4.70	4.74	9.10	9.21	9.34
Maximum Series Fuse Rating	[A]	25			10			25		
Maximum System Voltage	[V]	1000/1000			1000/1000			1000/1000		

Note: Standard Test Conditions [STC]: irradiance 1000 W/m²; AM 1.5 spectrum; cell temperature 25°C.

TEMPERATURE PARAMETERS		PLM-M36 Series	PLM-N36 Series	PLM-W36 Series
NOCT	[°C]	48	48	48
Temperature Coefficient of Voc	[%/°C]	-0.38	-0.38	-0.38
Temperature Coefficient of Isc	[%/°C]	0.28	0.28	-0.28
Temperature Coefficient of Pm	[%/°C]	-0.008	0.008	0.008

PHYSICAL AND MECHANICAL PARAMETERS		PLM-M36 Series	PLM-N36 Series	PLM-W36 Series
Dimensions	[mm]	1709 x 973 x 20	1709 x 348 x 20	1709 x 1292 x 20
Weight (module without adhesive)	[kg]	2.9	1.2	3.7
Weight (module with adhesive)	[kg]	4.0	1.8	4.9
Weight/Area (module without)	[kg/m²]	1.7	2.0	1.7
Weight/Area (module with adhesive)	[kg/m²]	2.4	3.0	2.2
Cell Type		CIGS	CIGS	CIGS
Junction Box		IP 67	IP 67	IP 67
Bypass Diodes		27	9	36
Connector		MC4 Compatible	MC4 Compatible	MC4 Compatible

*2.5mm for the rest of the module with adhesive; *1.5mm for the rest of the module without adhesive; *Please see full warranty for details





ELECTRICAL PERFORMANCE (STC)		PLM-M56 Series			PLM-N56 Series			PLM-W56 Series		
Nominal Power	[W]	370	380	390	115	120	125	480	500	510
Aperture Efficiency	[%]	16.00	16.50	16.90	15.00	15.60	16.30	15.60	16.30	16.60
Maximum Power Voltage	[V]	30.10	30.30	30.50	28.30	28.80	29.30	59.90	60.20	60.20
Maximum Power Current	[A]	12.31	12.55	12.80	4.06	4.16	4.27	8.02	8.31	8.47
Open Circuit Voltage	[V]	37.60	37.60	37.80	36.00	36.50	37.00	74.90	75.10	75.20
Short Circuit Voltage	[A]	13.98	14.10	14.31	4.69	4.71	4.75	9.20	9.32	9.42
Maximum Series Fuse Rating	[A]	25			10			25		
Maximum System Voltage	[V]	1000/1000			1000/1000			1000/1000		

Note: Standard Test Conditions [STC]: irradiance 1000 W/m²; AM 1.5 spectrum; cell temperature 25°C.

TEMPERATURE PARAMETERS		PLM-M56 Series		PLM-N56 Series		PLM-W56 Series	
NOCT	[°C]	48		48		48	
Temperature Coefficient of Voc	[%/°C]	-0.28		-0.28		-0.28	
Temperature Coefficient of Isc	[%/°C]	0.008		0.008		0.008	
Temperature Coefficient of Pm	[%/°C]	-0.38		-0.38		-0.38	

PHYSICAL AND MECHANICAL PARAMETERS		PLM-M56 Series		PLM-N56 Series		PLM-W56 Series	
Dimensions	[mm]	2583 x 973 x 20		2583 x 348 x 20		2583 x 1292 x 20	
Weight (module without adhesive)	[kg]	4.3		1.7		5.7	
Weight (module with adhesive)	[kg]	5.9		2.5		7.5	
Weight/Area (module without)	[kg/m²]	1.7		1.9		1.7	
Weight/Area (module with adhesive)	[kg/m²]	2.4		2.8		2.2	
Cell Type		CIGS		CIGS		CIGS	
Junction Box		IP 67		IP 67		IP 67	
Bypass Diodes		42		14		56	
Connector		MC4 Compatible		MC4 Compatible		MC4 Compatible	

*2.5mm for the rest of the module with adhesive; *1.5mm for the rest of the module without adhesive; *Please see full warranty for details

